

INTRODUCTION

A new timer feature, called Record Link, is being added to many DISH Network receivers. This timer option, shown as "EXT", sends data to compatible devices using the video signals, eliminating the need for IR blasters or emitters. The data included in the video signal can be additional programming information or control commands for setting up recordings.

RECEIVERS THAT CURRENTLY SUPPORT RECORD LINK:

- Model 4900
- DISH 111
- DISH 301
- DISH 311
- DISH 322
- DISH 351
- DISH 411
- DISH Player-DVR 522
- DISH Player-DVR 625
- DISH 811
- DISH Player-DVR 921
- DISH Player-DVR 942
- ViP211™
- ViP622 DVR™
- Future receivers when enabled by a software upgrade

DESCRIPTION

Record Link uses information included in the programming content sent from the satellite, which can then be sent from the receiver via the analog video connections to the PocketDISH, which can be controlled with the EXT timer type.

- This data contains the name of the event, the program description, and other information about programs.
- Record Link allows the timer information to be sent from the DISH Network receiver to compatible devices, allowing them to begin recording on their hard drive.
- The PocketDISH can use the information to initiate recording using its analog audio/video inputs.
- After the show has been recorded to the PocketDISH's hard drive, the recorded event will contain program information, such as the name and channel.
- This timer information is sent to the PocketDISH by either the RCA-type video connection or the S-video connection.

HOW TO USE EXT TIMERS

To use Record Link with the PocketDISH AV500E or AV700E as an external recording device:

- Connect the PocketDISH docking station to a Record Link-enabled receiver using the RCA or S-Video cable with the RCA audio cables.

- The PocketDISH docking station must be connected to power.
- On the 322, 411, and ViP211, Record Link must be enabled by going to MENU, 6, 1, 7 (VCR Setup). Select **EXT Setup** and select the **Enable** option. On the 522, 625, 942, and ViP622 DVR, enable Record Link by going to MENU, 8, 6 (Record Plus). Select **EXT Setup** and select the **Enable** option.

EXT Setup Screen:



- Other receivers supporting Record Link automatically display the timer option in the **Create Timer** menu.
- Choose a future event you would like to record to your PocketDISH's hard drive.
- Select the **Auto/Ext** or **EXT** timer option in the **Create Timer** menus.
- The EXT timer will automatically tune the receiver to the pre-selected channel, and command the PocketDISH to start and stop recording at the pre-selected times.
- The PocketDISH *must* be connected to the receiver when the timer fires and during the event to record the event.

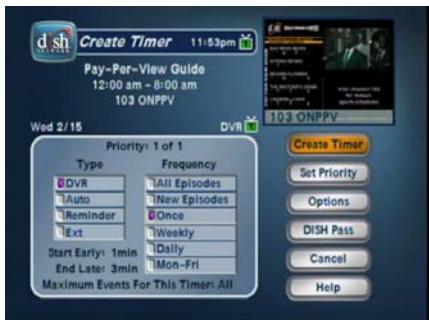
Quick Facts

Record Link

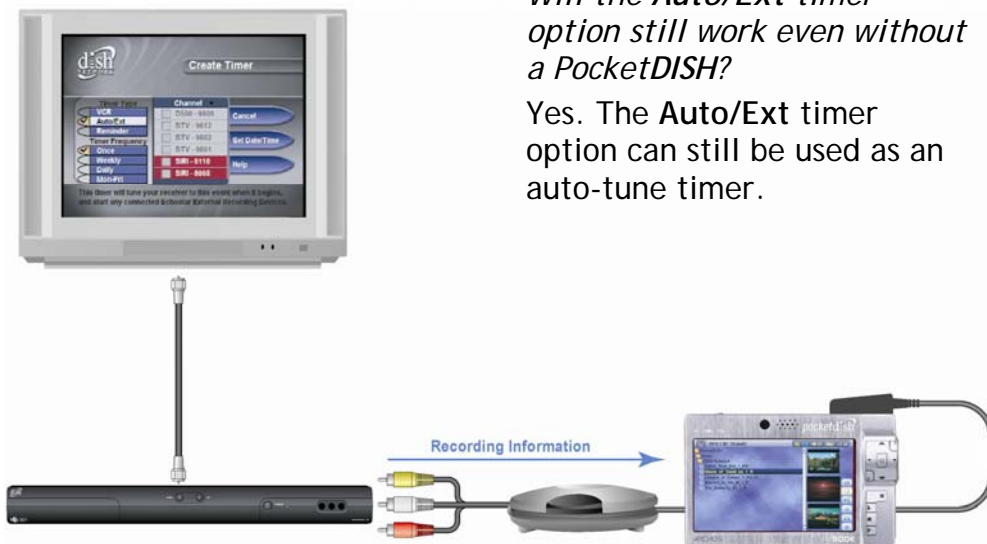
Create Timer Screen:



Create Timer Screen:



Connection Diagram for PocketDISH:



Frequently Asked Questions:

Will the PocketDISH be able to record any content using Record Link?

The PocketDISH's recording abilities are subject to copy protection restrictions.

Can the EXT information be seen on the TV?

No. The EXT timer information is transmitted using the same section of video content as Closed Captioning. To use EXT timers, the PocketDISH must be connected to the analog video and audio connections.

Does the PocketDISH have to remain constantly connected to the receiver for EXT timers to work?

The PocketDISH only needs to be connected to the receiver for the duration of the scheduled recording.

Will the Auto/Ext timer option still work even without a PocketDISH?

Yes. The Auto/Ext timer option can still be used as an auto-tune timer.

Does the PocketDISH need to have additional software to use Record Link?

No. The PocketDISH can understand Record Link information without any software upgrades.

On the receivers with the EXT Setup screen do you have to Enable Recordings to an external device to use Record Link?

Yes. The EXT timer option will not be visible in the Create Timer screen unless this option is enabled.

Will all 3 sizes of the PocketDISH be able to use Record Link?

No. Only the two larger PocketDISH models will function with the EXT timer type. The timer information is sent over the analog video connections, and the smallest PocketDISH (AV402E) does not have a video input.